



Gloucester Close, Knaphill, Woking, GU21 2FN  
£515,000 Freehold

**brandons**

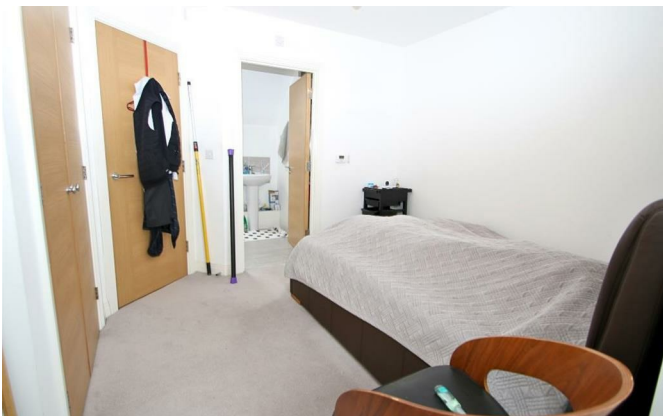
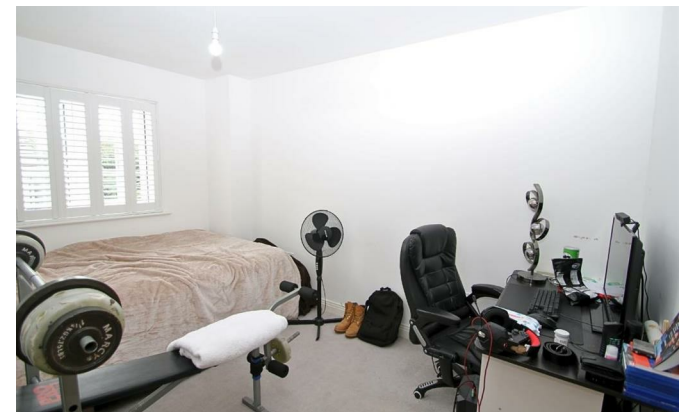
# brandons

**\*\* No onward chain \*\*** We are delighted to present to the market for sale this beautifully presented four-bedroom family home that boasts three allocated parking spaces. On the ground floor there is a front aspect kitchen fitted with a stylish range of base and eye level high gloss units with integrated double oven a gas hob and further integrated appliances. A rear aspect living/dining room with a useful storage cupboard and doors out to the garden. Plus, a downstairs cloakroom. This spacious terraced home that lies within walking distance of Brookwood Mainline Station offers accommodation that's arranged over three floors. The master bedroom with built-in wardrobe space and en-suite shower occupies the top level while the remaining three bedrooms are on the first floor along with a modern family bathroom.

Brookwood Farm is moments from Knaphill village centre which has a vibrant range of shops, pubs, restaurants and a Post Office. For more comprehensive shopping Sainsbury's superstore is within a quarter of a mile. Brookwood station provides a regular service direct to Waterloo, Woking and Guildford. For those who enjoy the outdoors there is Stafford Lake which is ideal for dog walking and Brookwood Country Park perfect for a stroll on a Sunday. Primary and Secondary schools are highly regarded, and excellent pre-school and nursery schools are close-by.  
Council Tax Band -E  
Annual charges £379.00

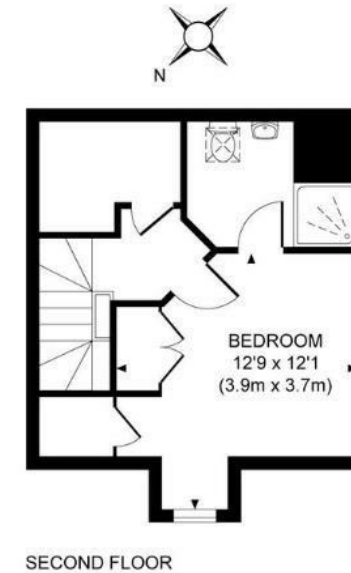
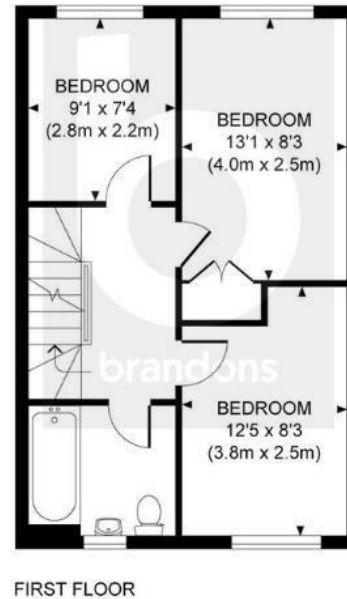
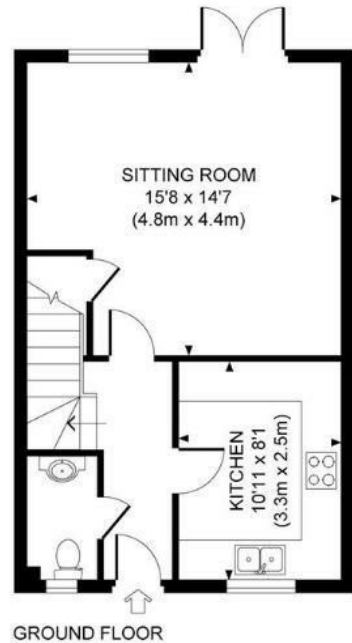


# brandons



# brandons

Approximate Gross Internal Area  
1080 sq ft / 100.4 sq m



Energy Efficiency Rating		Environmental Impact (CO <sub>2</sub> ) Rating	
Current	Potential	Current	Potential
88	97	97	97

England & Wales EU Directive 2002/91/EC

To arrange a viewing please contact brandons residential estate agents on 01483 798840 or email [sales@brandonsmove.co.uk](mailto:sales@brandonsmove.co.uk)

brandons residential estate agents have not tested any apparatus, equipment, fixtures or services so cannot verify they are in working order or fit-for-purpose. The buyer is advised to obtain verification from their solicitor or surveyor.



[www.brandonsmove.co.uk](http://www.brandonsmove.co.uk)

these particulars should not form the basis of an offer or contract, although every care has been taken in the preparation, the accuracy is not guaranteed.

